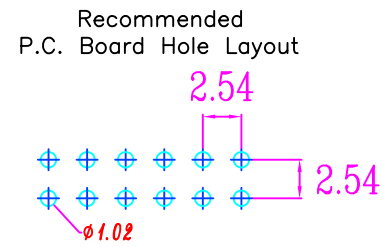
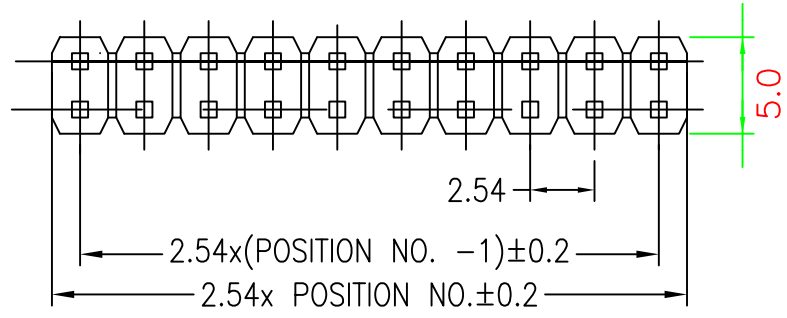
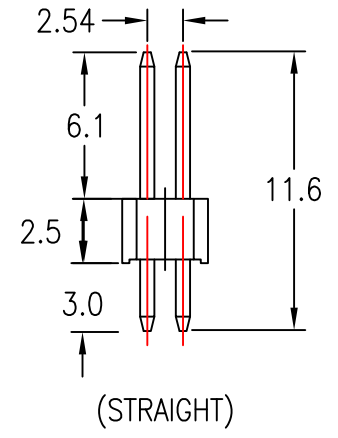


1 2 3 4 5 6 7

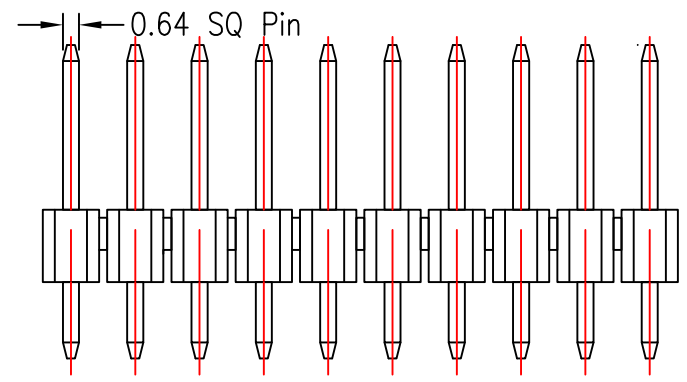
A



NOTE :4 ~80 POSITION



B



PN:2131-xxSE
 POSITION _____
 xx=(2*xxPIN)
 04PIN~80PIN
 TYPE _____
 S:STRAIGHT(180D)

C

D

Specifications:

- Insulator Material:PBT &30% Glass Fiber(UL 94V-0)
- Contact Resistance: 20m ohms max at DC 100mA
- Insulator Resistance: 1000M ohms min at dc 500V
- Current Rating: 1 AMP
- Dislectriv Withstanding Voltage:AC 500V For 1minute
- Temperature Rating: -40°C ~ +85°C
- Contact Material: Phosphor Brass

E



PROJ	SCALE : F DO NOT SCALE DWG		2131	
APP	James	01-04-14	TITLE P/H xxP(2*N) Pitch:2.54mm 180D	
CHK	Shirley	29-04-13	UNIT	REV. X5
DRW	Huang	02-01-12	MM	SHT 1 OF 1 SIZE A4

1 2 3 4 5 6 7