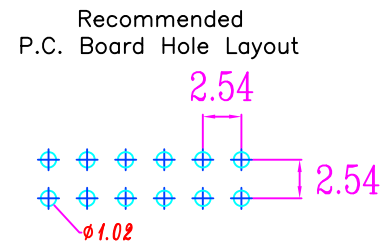
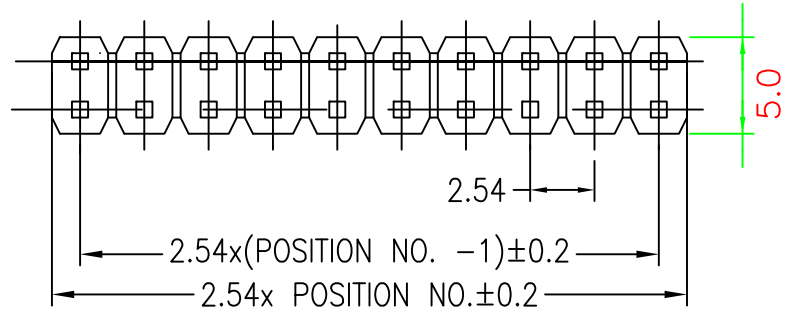
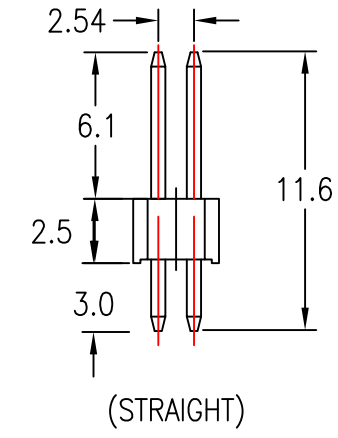


1 2 3 4 5 6 7

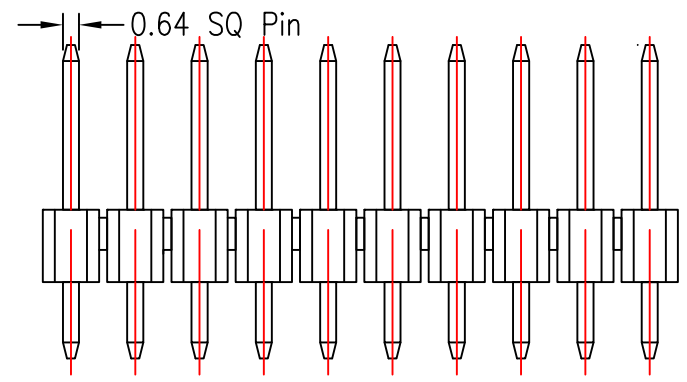
A



NOTE :4 ~80 POSITION



B



PN:2131-xxSE  
 POSITION \_\_\_\_\_  
 xx=(2\*xxPIN)  
 04PIN~80PIN  
 TYPE \_\_\_\_\_  
 S:STRAIGHT(180D)

C

D

Specifications:

- Insulator Material:PBT &30% Glass Fiber(UL 94V-0)
- Contact Resistance: 20m ohms max at DC 100mA
- Insulator Resistance: 1000M ohms min at dc 500V
- Current Rating: 1 AMP
- Dislectriv Withstanding Voltage:AC 500V For 1minute
- Temperature Rating: -40°C ~ +85°C
- Contact Material: Phosphor Brass
- RaHS

E

**2131D2\*2GSE**

|          |                               |                 |
|----------|-------------------------------|-----------------|
| PROJ<br> | SCALE : F<br>DO NOT SCALE DWG | DWG NO.2131-S00 |
|----------|-------------------------------|-----------------|

|                                |     |         |          |  |            |
|--------------------------------|-----|---------|----------|--|------------|
| GENERAL<br>TOLERANCE<br>± 0.20 | APP | James   | 01-04-14 | TITLE<br>P/H xxP(2*N) Pitch:2.54mm<br>180D RoHS TYPE | REV.<br>X5 |
|                                | CHK | Shirley | 29-04-13 |  |            |
|                                | DRW | Huang   | 02-01-12 | UNIT<br>MM   | SHT 1 OF 1 |

1 2 3 4 5 6 7