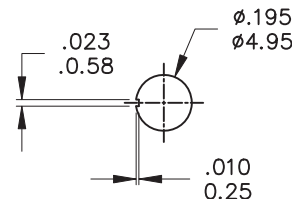


P.C. MOUNTING



PANEL MOUNTING

Model No.	POS.1	POS.2	POS.3
	2MS1	ON	NONE
Term. Comm.	2-3	N/A	2-1
SCHEMATIC			

SWITCH FUNCTION

**SPECIFICATIONS**

**MECHANICAL LIFE:** 30,000 make-and-break cycles.  
**CONTACT RESISTANCE:** 20 mΩ max. initial @ 2-4VDC  
 100mA for both silver and gold plated contacts.  
**INSULATION RESISTANCE:** 1,000 MΩ min.  
**DIELECTRIC STRENGTH:** 1,000 Vrms min. @sea level.  
**OPERATING TEMPERATURE:** -30°C to 85°C.

**MATERIALS**

**CASE** - Diallyl phthalate(DAP)( UL94V-0 )  
**ACTUATOR** - Brass,chrome plated  
**BUSHING** - Brass,nickel plated  
**HOUSING** - Stainless Steel  
**SWITCH SUPPORT** - Brass,tin plated.  
**TERMINALS/CONTACT** - Brass, with Silver or gold plated.  
 RoSH - 2002/95/EC

	CONTACT PLATING	TERMINAL PLATING	RATINGS
Q	Silver	Q = Silver	3 Amps @120 VAC or 28VDC 1 Amps @250 VAC
S		S = Silver,pure-tin	
C	Gold over Silver	C = Gold over silver	
K		K = Gold over silver,pure-tin	
R	Gold	R = Gold	0.4 Volt-Amps(VA) max. @20V max. (AC or DC)
G		G = Gold,pure-tin	

SCALE (比例) : 3 : 2

TOLERANCE (公差) :  
 0.00 mm ± 0.25mm  
 0.0 mm ± 0.40mm  
 ANGULAR : ± 5°

FILE NAME : 2MSP0756

TITLE 圖名	Sub - Miniature Toggle Switches		SIZE 圖紙	A4
DWG NO. 圖號	2MS1-T1-B4-VS2-S-E		UNIT 單位	inch mm
REV. 版本	A	DATE 日期	OCT - 07 - 2011	SHEET 張數
CHECKED BY 審核	RICHARD		DRAWN BY 製圖	IRENE

	符號	原尺寸	修改後尺寸	變更日期
1	Ⓐ			
2	Ⓑ			
3	Ⓒ			
4	Ⓓ			
5	Ⓔ			